



Welcome to
2022

LIS OPEN HOUSE



LIS Mission



Our Mission is to create a total educational experience through the combined efforts of faculty, staff, parents and community that provides a positive learning environment that develops:

- Academic skills
- Social Responsibility
- Cooperative experiences which empowers students to succeed in a global setting and become successful contributing members of the 21st Century
- Provide a safe & health environment for students and staff.





Change in Tardy Bell 2022-2023

**8:40-All students in
Homeroom ready for
announcements!**





What are the important times in the schedule?

- Students should not arrive before 8:15 a.m. and cannot be dropped off early.
- Breakfast is served from 8:15–8:35
- Tardy Bell & Morning Announcements begin at 8:40
- Classes Begin at 8:45
- School Day ends at 3:25



Attendance, Reporting Absence

- A student who is frequently absent cannot achieve or excel.



Parents should report absences to LIS Office by 8:30 a.m
by calling 330-898-4569



A written excuse should be submitted to the school office within 24 hours of the student's return to school. Any doctor's excuses should be submitted within 5 days of the student's return to school.



Students who are frequently absent without calling off may receive a wellness check in from our resource officer.

Excessive Absence & Habitual Truancy

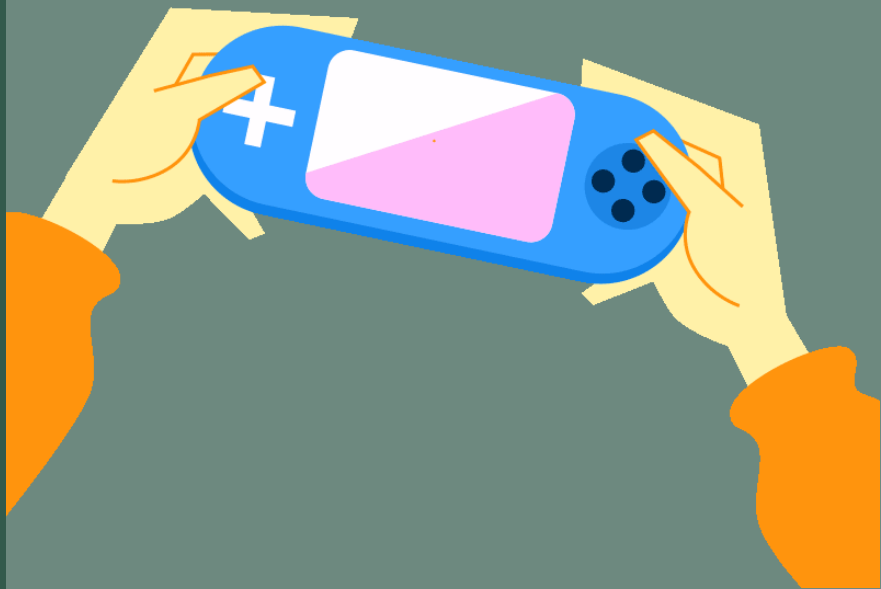
Parents/Guardians by Ohio Law are Responsible For Ensuring That Their Children Are In Regular Attendance at School



- Schools Must Notify Parents/Guardians If Their Child Has Excessive Absences Which Means WITH or WITHOUT Legitimate Excuse, (Excludes Medical Excuses)
- 38 or More Hours in One Month (6 days)
- 65 or More Hours in One School Year (10 days)

Schools Must Notify Parents/Guardians If Their Child Is Habitually Truant Which Means WITHOUT Legitimate Excuse For:

- 30 or more consecutive hours (5 days)
- 42 or more hours in a school month (7 days)
- 72 or more hours in a school year (12 days)





Attendance-HB 410

Consequences

- Habitually Truant Students and Their Parents/Guardians Are Required to Meet With the Absence Intervention Team (AIT) Principal, Counselor, Teacher, Resource Officer, & Possibly Other District Officials and County Resources
- If Attendance Does Not Improve After Being on an Absence Intervention Plan, the School Will File a Complaint With the Juvenile Court Where Parents/Guardians Can Be Charged With a First Degree Misdemeanor
- As Per LaBrae's Board Policy, Any Student Who Acquires 18 Unexcused Absences in One Year Could Be Subject to Retention



Procedures for Dropping Off in the AM

Students NOT riding the school bus are dropped off in front of the Intermediate Building in front of the office.

Students exit the car on the CURB side for safety reasons.

Buses only in the bus drop area.

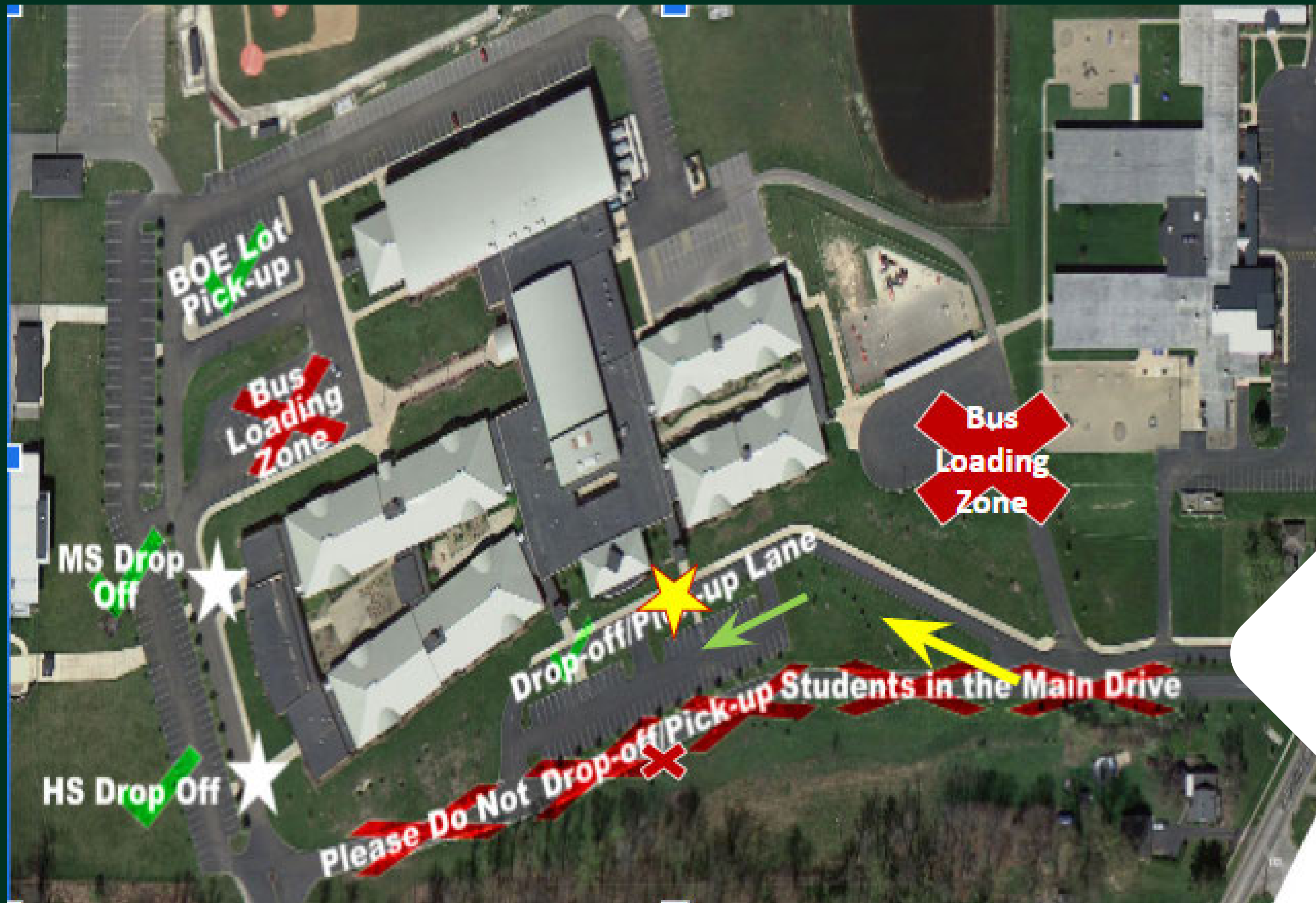
Picking Up Students

Parents picking up students on a regular basis (even one day a week) are to fill out a Permanent Pick Google Form. You will pull up in the lane in front of the Intermediate Office. Students will be walking out the high school office door and enter the car on the passenger side.

Parents picking up students less than 2 times a week should report to the office between 3:10 & 3:20 to sign their child out. They should then wait outside the main office door.



Overview of Drop Off & Pick Up





Student Handbook Complete List of Guidelines pg. 16

**Attire that is appropriate for school.
No obscene words or phrases.
Prevailing rules of modesty, decency,
neatness and cleanliness.**

Specific Reminders for Dress Code

**No sunglasses, pajama tops or bottoms, flip-flops, sweatpants, cut-offs, spandex, "heelys" shoes, unnatural hair coloring or Mohawk cuts, body piercing, saggy or baggy pants, ripped jeans or hats.
All bottom attire must be worn at the natural waist.**

Bus Behavior

Safety Depends on Student Cooperation

Students wait at safe distance from roadway.

Enter the bus in an orderly manner.

Reasonable volume conversations.

Seats will be assigned

Pupils keep hands, arms & head inside the bus.

No shouting, roughhousing or throwing things

All student articles are kept out of the aisles.

Emergency door for emergency only

Children should not touch safety equipment.

Students are accountable if they cause any damage to the bus.



New Disciplinary Consequences for Bus LIS & Bascom



Step	Violation	Response/Consequence
1	First	Warning (unless a more serious violation- then consequence advances to Step 2)
2	Second	Detention
3	Third	Parent meeting with Driver LIS-Saturday Detention
4	Fourth	1-3 Day Bus Suspension (depending on the violation)
5	Fifth	3-5 Day Bus Suspension (depending on the violation)
6	Further Incidents	10 Day Bus Suspension & Meeting with the Transportation Supervisor to determine the continuation or suspension of bus transportation,

The principals may at his/her discretion revise, amend or adapt this disciplinary response as conditions warrant based on severity and frequency of offenses.

Lunch



Free and Reduced Price Lunches are available for those who qualify. Forms, required by the State of Ohio, must be completed in order for the cafeteria manager to approve participation.

If you qualify for Free Lunch and have checked the appropriate box to share that information, then instructional fees for the school year may be waived. Breakfast is also available for all students.

Breakfast

K-5 \$1.10, Reduced Price \$.30

Lunch

K-5 \$2.25, Reduced Price \$.40

Milk: \$.50 (All Grade Levels)

**LaBrae
Intermediate Web
<http://labrae.school>**



THE FOLLOWING CAN BE FOUND ON OUR WEB PAGE

PaySchools

PAM (This is parent access to grades)

FinalForms

Staff Directory for Class Websites & Teacher Email

Supply Lists

Lunch Menu

Monthly Newsletter



Final Forms

All forms online



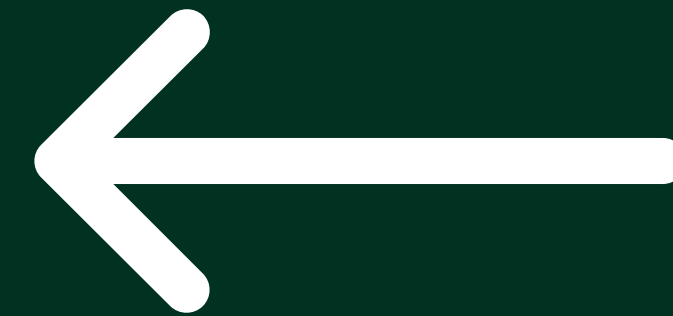
login

PAM

Parent Access Module Grades & Assignment Alerts



Login to Sign up



**ParentAccess alerts are emailed
daily at 10:00 a.m.**

Sign Up

New to ProgressBook? You will need to create an account and enter a registration key provided by your school district.

[+ Sign Up](#)



Google Classroom

Sign Up for Google Classroom Access
by requesting your teacher sends you a parent invite!
When parents join Classroom, they receive automatic
email summaries for each of their learners.
Google is used to post daily assignments, links,
projects and homework!

New for the 2022-23 School year, if the number of calamity days exceed 5 days, any additional snow/calamity days will be remote learning. The students would access Google Classroom & join Google Meets according to the following schedule, which is the same remote schedule used during Covid remote learning days.

Google Meet -Direct Instruction Times DAILY (Monday-Friday)			
Time	Grade	Homeroom/Subject	Homeroom/Subject
12:00	Grade 5	Math 504, 502	ELA 501, 503
12:30	Grade 4	Math 404, 401	ELA 402, 403
1:00	Grade 3	Math 302, 304	ELA 301,303
1:30	Grade 5	Math 503, 501	ELA 504, 502
2:00	Grade 3	Math 301, 303	ELA 302, 304
2:30	Grade 4	Math 405, 406	ELA 402, 403
3:00	Grade 5	Sci/SS -rotate	Sci/SS -rotate



Messaging Your School Community

Sign up for
parent/teacher
communication via
texts!

Parent Teacher
Conferences
October 13, 2022
February 13, 2023
Sign Up Appointments
On Line

**SignUp
Genius**



Other Communication Tools



VIKING
NATION
APP

LaBrae Intermediate APP

LaBrae Intermediate APP

Used to keep

CLOSED

See our web page for more information

Intermediate School Newsletters

- Intermediate Newsletter May 2022
- Intermediate Newsletter April 2022
- Intermediate Newsletter March 2022
- Intermediate Newsletter February 2022
- Intermediate Newsletter January 2022
- Intermediate Newsletter December 2021
- Intermediate Newsletter November 2021
- Intermediate Newsletter October 2021
- Intermediate Newsletter September 2021
- Intermediate Newsletter August 2021

Viking Nation Concludes

Twitter



LaBrae Intermediate

@LaBraeIntSchool

Learners today, leaders tomorrow.

Leavittsburg, OH twitter.com/LabraeIntSchool

Joined September 2012



Monday-Thursday Practice Review

Homework



- Students are expected to complete daily or weekly assignments and turn them in on time.
- Projects will be broken down into components with a timeline.
- Homework grades are a part of the overall quarter grade and vary for each teacher.
- When students are absent for more than two days, parents may request to pick up work by calling the school office. Please give 24 hours notice for picking up work; however, in most cases, Google Classroom will be used as the resource for student makeup work!
- Red Pocket Plastic Folder daily contain homework & important information. Viking folders sent weekly or biweekly contain student work to be viewed by parents and kept at home.

School Supplies



The screenshot shows the LaBrae Local School District website. At the top left is a logo featuring a Viking head. To its right is the text "LaBrae Local School District" and "Home of the Vikings". Below this is a navigation bar with buttons for Home, District, High School, Middle School, Intermediate School, and Bascom Elementary. On the left side, under the heading "Intermediate Supply Lists", there is a list of links for Fifth, Fourth, and Third Grade for the 2022-2023 school year. At the bottom left is an Adobe Reader download button. On the right side, there is a vertical menu with links for Fees, Intermediate News, Intermediate Open House Slide Show, Intermediate Staff Directory, Intermediate Student Handbook, and Intermediate Supply Lists. A large red arrow points from the "Intermediate Supply Lists" link in the right menu to the list of links on the left.

LaBrae Local School District
"Home of the Vikings"

Home ↓ District ↓ High School ↓ Middle School ↓ Intermediate School ↓ Bascom Eleme

Intermediate Supply Lists

- Supply List for Fifth Grade 2022-2023
- Supply List for Fourth Grade 2022-2023
- Supply List for Third Grade 2022-2023

Get ADOBE® READER®

Fees

Intermediate News

Intermediate Open House Slide Show

Intermediate Staff Directory

Intermediate Student Handbook

Intermediate Supply Lists

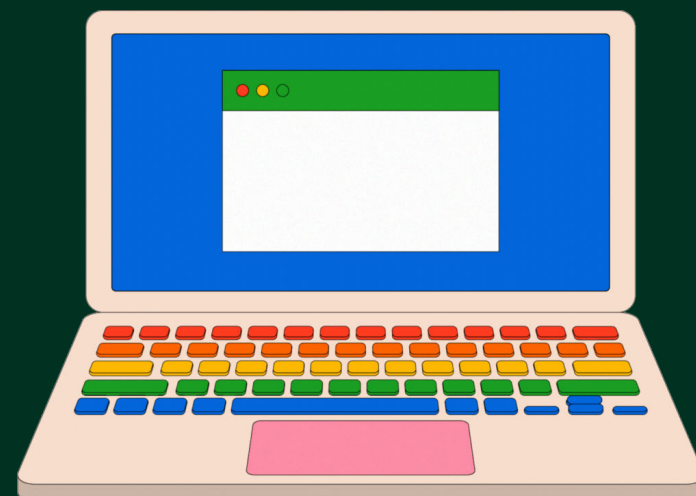
Access lists on
LaBrae Website
under
Intermediate
School or School
Office

Computers & Cell phones

Technology Violations are
NOT tolerated.

Students are held
accountable for any
unassigned activities or
surfing.

Computer use is for school
only!



No cellphones are
permitted.-they will be
confiscated and held for
parent pick up in the office.



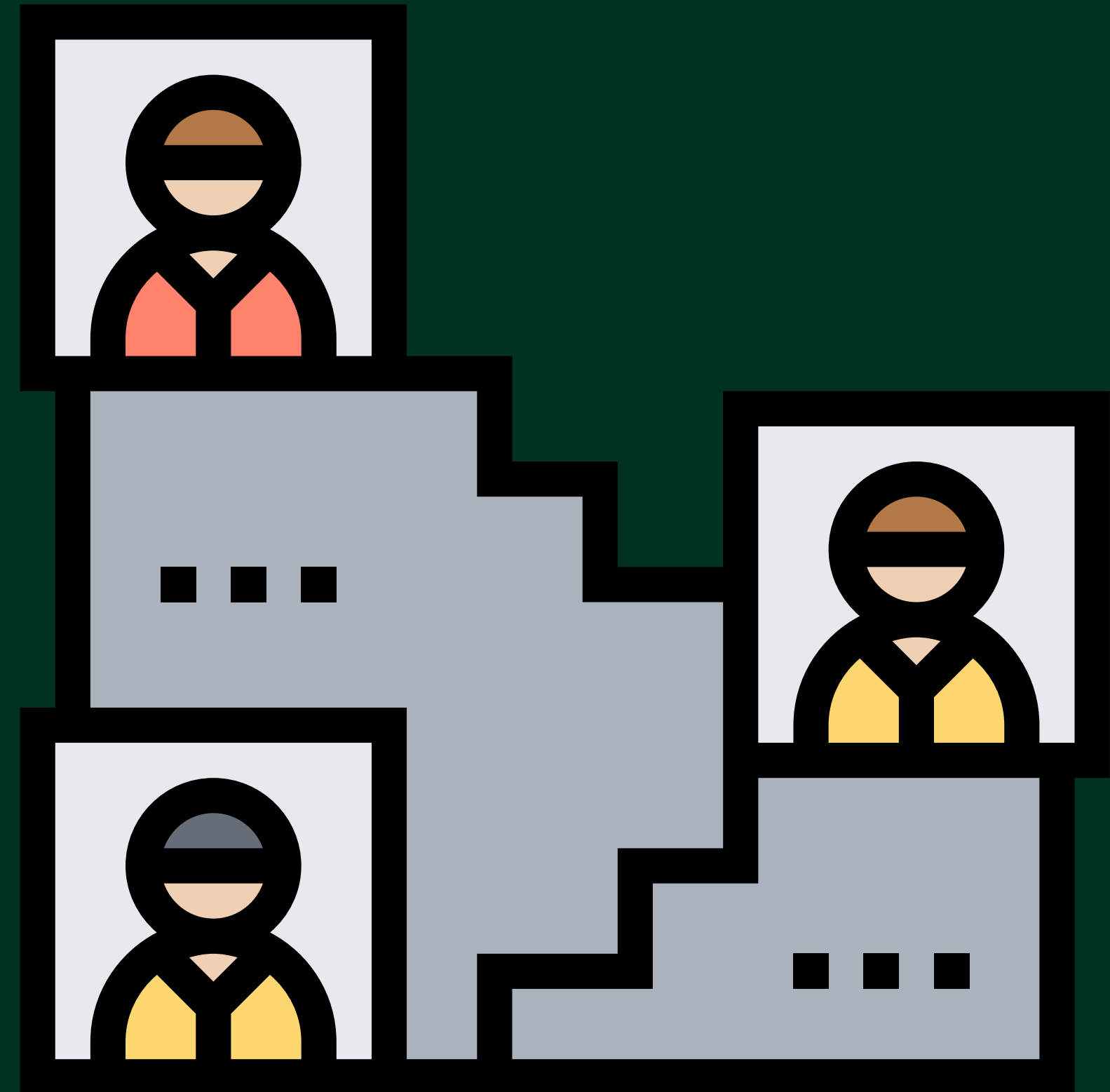
Chain of Command Questions & Concerns

Start with the Teacher

Principal

Superintendent

Board of Education



Introducing Staff



Admin & Support Staff

Principal- Kay A. Suzelis
Secretary- Carrie Guesman
Literacy Coach- Jessica Glatz
School Counselor- Jason Diaz



Mrs. Stephanie DeCesare- 302

Mrs. Christine Meeks-302

Mrs. Mandy Rowe-303

Mrs. Brittane Jones-304

Mrs. Nicha Mackey-305

Grade
3



Grade

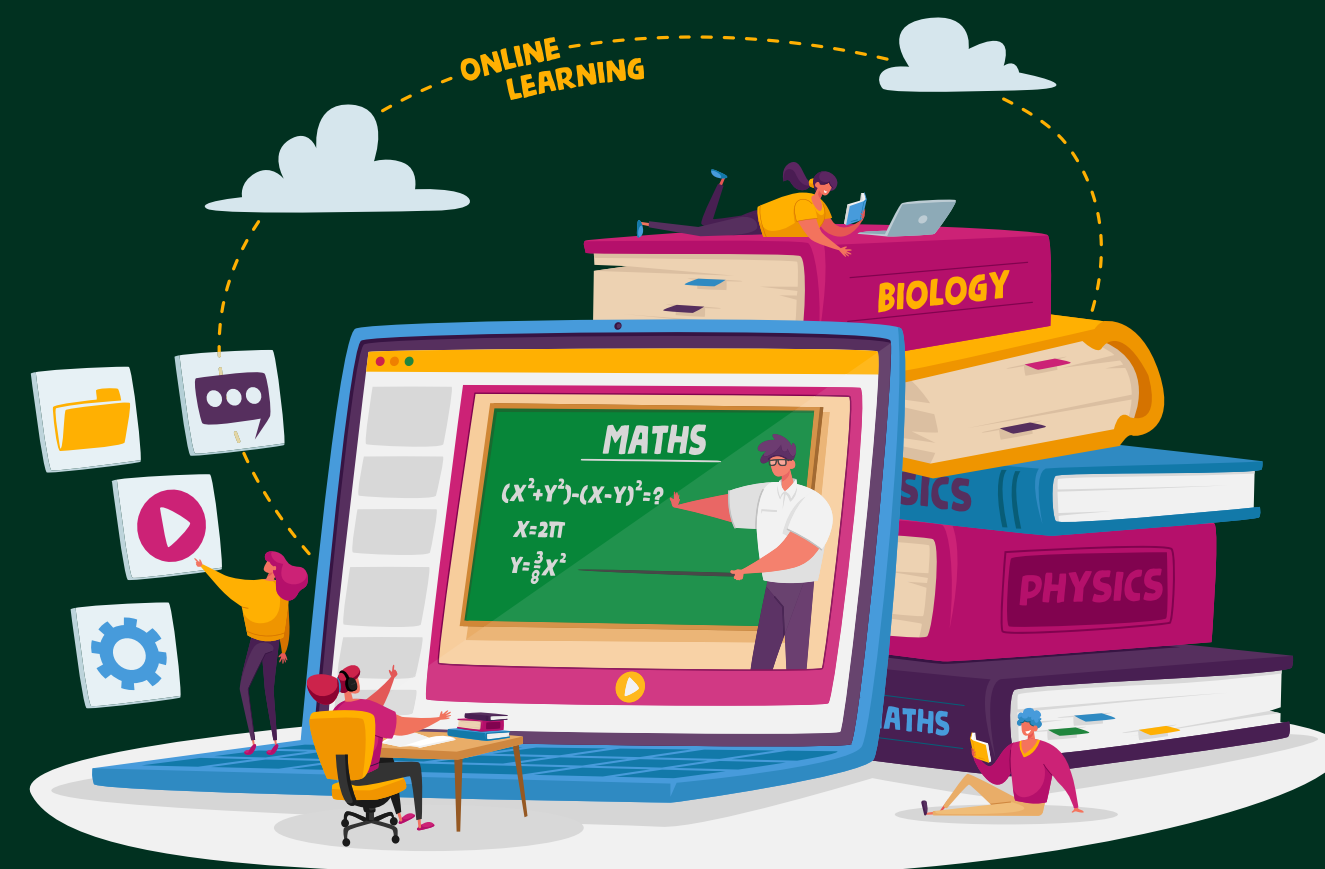
4

Mrs. Jennifer Balzer-401

Mrs. Michele DeProfio-402

Mrs. Michele Cordner-403

Mrs. Donna Alflen-404



Grade 5



Mrs. Tanya Cimmiento-501
Mrs. Regan Shanower-502
Ms. Maddie Crish-503
Mrs. Heather Sabo-504
Mrs. Jill Huffman-505



*Title &
Gifted*



Mrs. Christine DeArmitt-306

Mrs. Kim Pierson-306

Mrs. Char Brandt-505

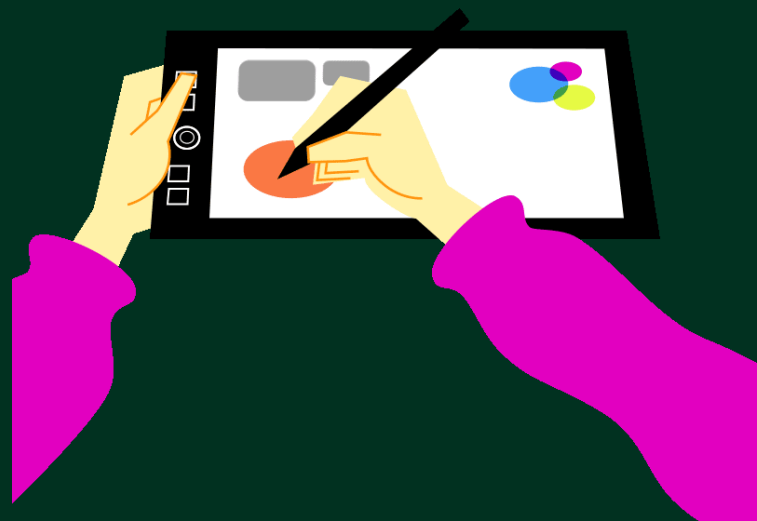
Mrs. Katie Ford-505

Mrs. Deborah Morgan-506



Special Staff

Music-Mrs. Helmick 405
Art-Mr. Trimbur 514
Computer-Mrs. Cuismano 513
Gym-Ms. Simeone MS Gym
Library- Mrs. Harp LIS Library

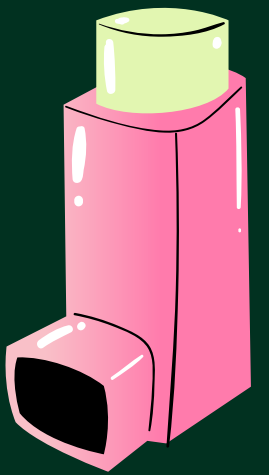
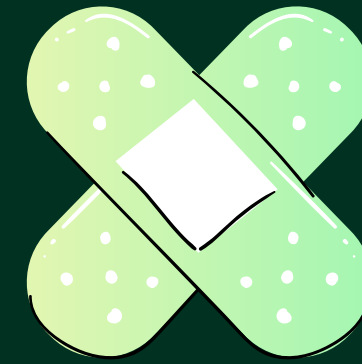


School Nurse-Mrs. Harper

- Emergency Medical Forms Must Be Filled Out Online in Final Forms BY THE 1st DAY OF SCHOOL
- Medications & Proper Medical Documentation, EpiPens, Inhalers= MUST BE AT SCHOOL DAY 1
- Lice, Rashes, Fevers, Vomiting, etc. 24 Hr. Rule Immunizations-Need to Be Up to Date and Shot Record Turned in by Sept. 30th or Excluded From School (Non-Excused Absences)



Health & Medication



- Administer medication at home if at all possible.
- Prescription medication must be accompanied by a doctor's order and labeled.
- Medication is brought to school in a container appropriately labeled by pharmacy or physician.
- A written release form from the parent/guardian is required.
- All medication is stored in the office.
- Administration of medication will take place in the office by appointed school personnel.
- Keep school nurse informed of health status or new weed of your student



Discipline-Code of Conduct

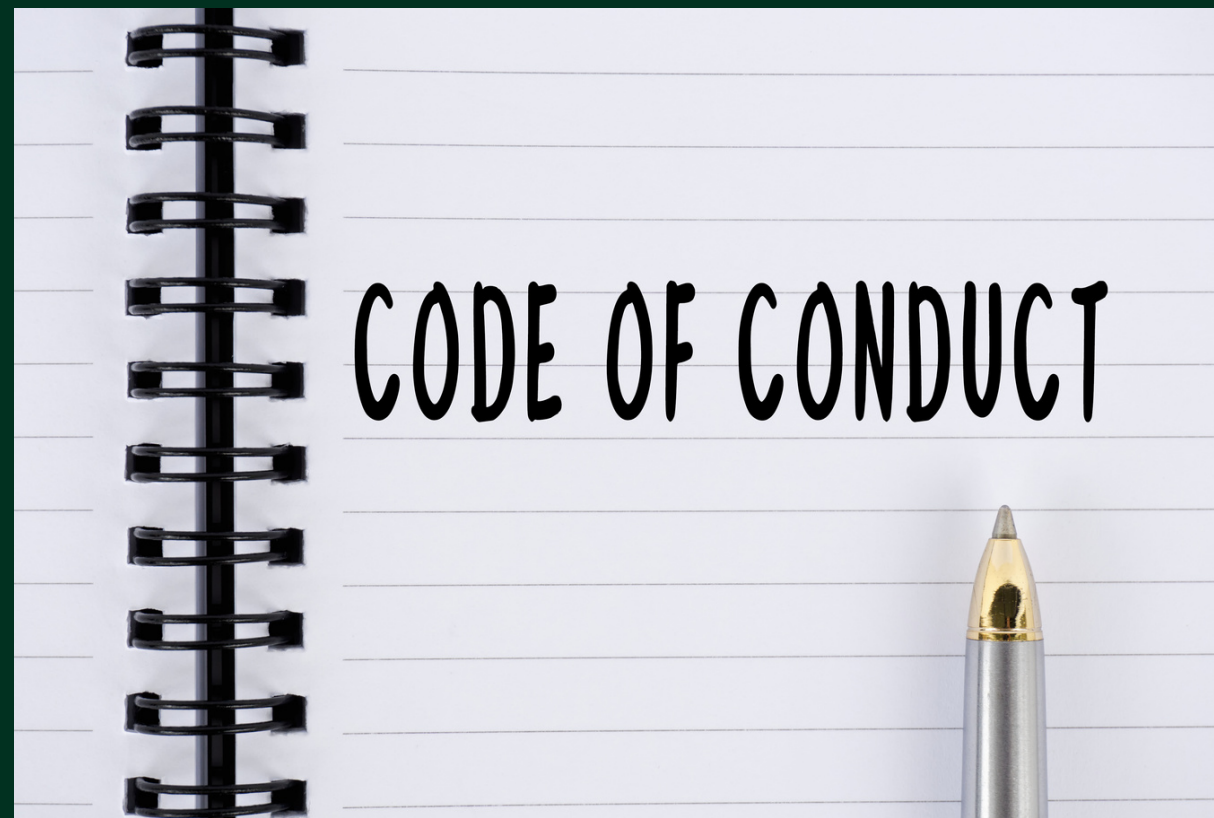
Board Policy ~ Student Handbook pg. 18
Individual Classroom Rules

- HB 318 Law Requires School-Wide Implementation of PBIS; K-5 Teachers & Bus Drivers Trained in PAX
- PAX = Set of Strategies to Help Students Learn Important Self-Management Skills While Collaborating to Make Their Classroom a Peaceful and Productive Learning Environment
- Evidence-Based Practice Consisting of Behavioral Health Strategies
- Universal Preventive Intervention Improves Classroom Management, and Also Provides a Lifetime of Benefits for Every Child by Improving Self-Regulation



Students will be instructed
& review all rules &
procedures the first day of
school!





Code of Conduct Behavior Consequences

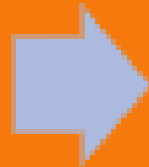


Stress Positive Choices and redirection of behavior.

- **Loss of Privilege or Activities**
- **Morning Detention 7:30 -8:15 a.m. (Tuesday & Wednesday)**
- **Saturday Detention 8:00-11:30 a.m.**
- **OSS**
- **ISS-option rarely used & only when staffing can be made available**

Cafeteria

Students may be assigned tables.



Lunch room tables are to be kept clean with students cleaning up after themselves.



Proper table manners and speaking in normal tones.



Students must have permission to leave the cafeteria.



- No money transactions for students.
- All food eaten in cafeteria.
- No Sharing of Food
- All students are expected to eat a lunch.
- Trays & garbage disposed of properly.



Guidance Counseling & Social Services

- Amy Frederick-Director of Pupil Services
- LIS Counselor- Jason Diaz
- Social Worker- Ben Meredith
- Social Worker-Mr. Nick
- Behavior Specialist- Ms. Vanessa
- Therapy Dog- Millie & Oden



Playground Rules



- All children go out. (Unless raining or temperature is below 25)
- Use equipment for intended purpose.
- Use common sense & safety procedures on all equipment
- Stones, dirt & snow stay on ground
- Problems reported to adults.
- Candy or Gum not permitted.
- One person on a swing.
- No standing on swings.
- No jumping off moving swings.
- No hanging upside down on monkey bars.
- No leaving playground area.
- The school is NOT responsible for unauthorized use of the playground.



**Gaga Ball Pit
New This Year**



LIS &
Bascom
PTO

Join the PTA!



Stop at their Table!

Final Reminders

- **Please Notify the School Immediately With:**
- **Don't Forget to Create Your Final Forms Account to Fill Out & Electronically Sign ALL Back-to-School Forms Online**
- **Please Keep the Office Updated Throughout the Year on Final Forms With Changes (Address, Email, Home & Cell Numbers of Parents & Emergency Contacts, Divorce, and/or Custody, etc.)**
- **Technology Fee \$10 & WB Fee \$40: Total School Fees= \$50 Total Per Student Can Be Paid With Cash/Check Sent in Envelope Marked w/Student Name on Online With PaySchools**