

LIS

FAMILY NEWS 2023



Volume 3 Issue # 7

Kay A. Suzelis, Principal

Calendar of Events

- 2/27 ELA Readiness Assessments
- 3/2 Spring Pictures
 - 6:00 Keeth Matheny in the Complex Cafeteria
- 3/3 Math Readiness Assessments
- 3/6-3/17 STUCO Pennies for Patients
 - 3/6-3/10 Spirit Week
 - 3/13-3-17 Pie in the Face
- 3/11 Scripps Spelling Bee at Stambaugh Auditorium
- 3/17 Grade 4 Band Mouthpiece testing at 1:30
- 3/20-3/23 Reading & Dr. Suess Week
- 3/21 Mobile Library
- 3/24 Professional Development Day & No School for students
- 3/17 ELA State Testing Window Opens
- 3/31 Quarter 3 Report Cards
- 4/4 Mobile Library
- 4/5 Awards Assembly

Mark Your Calendar State Testing Dates Gr 3-5 Tuesday & Wednesday

- ELA- April 18 & 19
- Science- April 25 & 26
- Math- May 2 & 3

Each month the calendar seems to get more and more crowded with activities here at LIS!

It was great to see so many parents attending our conference night in February. We appreciate the partnerships we can strengthen by working together and communicating.

Our 5th grade band performed for the first time publicly on Thursday, February 16th. Check out Twitter the 5th Grade Band slideshow and performance selections.



February 16th, our early release and conference day was also our day to celebrate Valentine's Day. Each grade level planned their activities and celebrations. Here is a few pictures from Mrs. Rowe's 3rd grade class.



Mark
YOUR
Calendar

Thursday,
March 2nd

You're Invited

In my many conversations with families over the last few years, a recurring topic has been, how we can meet the social emotional needs of our children Post-Covid.

The impact of these last few years has had a profound impact on our children's development, not just academically, but in developing, at the appropriate age level, coping skills for adversity, forming positive relationships, understanding social norms, recognizing and honoring boundaries, empathy and compassion and the difference between fiction and reality.

These things that I have mentioned are not in any way an exhaustive list. It seems like the more we walk back into normalcy- the more exposed are the deep seeded places of trauma. And that is exactly what we ALL have walked through....trauma.

Please consider attending this very important Community Engagement Night. It is for all of us.

I have been reading Keeth's book for educators and it is timely approach to challenge all of us to meet the new and emerging needs of our students.

Will you consider partnering with us on this very important night?



KEETH
MATHENY

LaBrae Invites You
To Our Community
Engagement Night

A Social-Emotional Discovery for Parents

- Pizza, chips & drinks served at 5:15 p.m.
- Pre K-6 Children's Activities/Supervision Provided by NHS & S.A.D.D.
- Family Resources Provided
- Gift cards to be raffled



To RSVP, SCAN THE QR CODE

LaBrae Local Schools
"Home of the Vikings"



Social-Emotional Discovery for Parents A Community Engagement Night

Addressing the needs of our children during difficult times with national award-winning teacher, author, speaker and leading SEL advocate **Keeth Matheny**.

March 2, 2023

6:00 - 7:00 P.M.

LaBrae Complex Cafeteria

- What is going on in our children's brain?
- How can we each better understand and support students to help them manage their emotions and make positive decisions?



LaBrae Local Schools / *"Home of the Vikings"*

Yearbook & Spring Pictures

- Deadline to Order yearbook is March 1, 2023

QR Code for
Yearbook
Ordering



Get your yearbook now- online ordering ends on 03/01/2023! Visit inter-state.com/flyerentry/74852P to order online.

Spring

Spring Pictures are Thursday, March 2nd

Flyers sent home with students and available in the office



Coming Soon

3/14 & 4/4

Mrs. Tracy Harp, our LIS school librarian has arranged for the Mobile Library to visit our school. This is a program that connects our school to the local libraries. Information will be coming home with students concerning library cards. The service is free and all students are invited to participate unless they opt out. All students will be visiting the mobile library on March 14th or April 4th!



Scripps Spelling Bee for our area will be held at Stambaugh Auditorium on Saturday, March 11th. Good Luck to our school winner, Johnny Bustard.



STUDENT COUNCIL



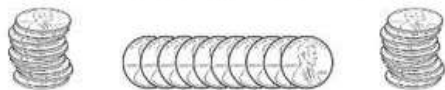
Pennies for Patients

SPIRIT WEEK

for Pennies for Patients

March 6th– March 10th students must bring in the coin for that day (or more) in order to participate.

- ★ **MONDAY: PAJAMA PENNY DAY**
- ★ **TUESDAY: NEON NICKELS DAY**
- ★ **WEDNESDAY: DAZZLING DIMES DAY**
- ★ **THURSDAY: CRAZY QUARTERS DAY
(SOCKS AND HATS)**
- ★ **FRIDAY: DOLLAR TEAM UP FOR
LEUKEMIA JERSEY DAY**



LaBrae Intermediate will be participating in the Pennies for Patients program from March 6th through March 17th.

Our first week(March 6th-10th) will be **SPIRIT WEEK!** Students must bring in the allotted coins to participate.

- Monday: Pajama Penny Day
- Tuesday: Neon Nickels Day
- Wednesday: Dazzling Dimes Day
- Thursday: Crazy Quarters Day (Socks and Hats)
- Friday: Dollar Team Up For Leukemia Jersey Day

We will be kicking off the second week(March 12th-17th) with our "PIE in the FACE" event. Students who bring in a dollar will get a paper penny to add to our wall of pennies and a ticket for a drawing, in which students will be selected to throw pies at Mrs. Cusimano during lunch. The date for this will be announced at a later date.

Throughout both weeks, we will also have other ways of donating...

- ★ Students are also able to bring in any coins and donate them in their homeroom coin bag.

WE ENCOURAGE ALL STUDENTS TO HELP US FOR THIS IMPORTANT CAUSE!

Student Council, under the guidance of Ms. Crish is sponsoring a "Pennies for Patients" drive. The details are included above. Our Council has been very active in planning monthly collections to help those in need. Below are some pictures from our Winter Clothing & Blanket Drive for the Warren Family Mission. Thank you to Ms. Crish and her students as well as the custodial staff for delivering our donations.





**Bascom & LIS Celebrate
"Reading & Dr. Seuss"
March 20-23, 2023**



Monday:



Cat in the Hat
Wear a Hat



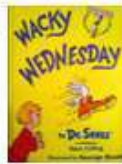
Tuesday:

Fox in Socks
Wear Crazy Socks



Wednesday:

Wacky Wednesday
Wear Wacky Clothes



Thursday:

Green Eggs & Ham
Wear Green



Friday:

No School Teacher Inservice Day

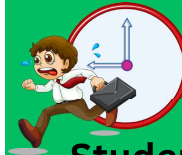
Bascom and LIS will have a week of celebration that focuses on reading & Dr. Seuss.

Students will have special theme days to dress up or add accessories to their school attire.

Please refer to the flyer (also sent home with students) to the left for the themes for each day.

No School

The week of March 20-23 is a short week. There is no school on Friday for students as this is a professional development day for teachers.



Tardy

Students must arrive to school on time! Students should be in the homeroom and ready to go by 8:40. Breakfast usually concludes around 8:35. If you are open enrollment and your student has excessive days tardy-it can and will affect your acceptance for Open Enrollment.



**4th Grade Mouthpiece Testing
for 5th & 6th Grade Band
March 17th- 1:30**



**4th grade students will be receiving information
from band directors: Erin Ott and Miranda
Gerchak.**



Readiness online exams will begin for ELA, Math (all grades) and Science (5th grade only). These are released test questions to prepare students for the Spring Testing. The dates for the opening window are: February 27th for ELA and March 3rd for Science & Math. The data from these assessments will drive our instruction focus before the Spring Testing cycle begins. Our dates for the actual testing is listed on the first page in **RED**.

LIS PTO UPDATE

PIZZA PIE Dance Slide Show



February was busy for our PTO with the Candygram sale and Pizza Pie Party Dances at LIS and Bascom. We appreciate all they do for our students and staff.

Meeting
March
14th
6:00
@
Bascom

PTO Spring Dance is scheduled for March 16th at 6:00 at the LaBrae Complex. Information will be sent home from the PTO. This is an annual event for families. This year is a Neon Event with a Glow in the Dark theme that will include glow sticks, etc. It will be great fun!



Report Cards & Honor's Assembly for the 3rd Quarter

The end of the 3rd quarter is Thursday, March 23rd (there is no school on Friday). Reports Cards will go home on Friday, March 31st and the LIS Honor's Assembly will be held on Wednesday, April 5th. We usually schedule awards on the Tuesday after report cards, but that is the day our Mobile Library will be visiting us at LIS.



Mrs. Adair, pictured to the left, has returned from retirement to fill in for Mr. Jason Diaz, who is recuperating from surgery. She brings many years of experience to our building and is part of our Viking family. She has been introduced to the students and is already hard at work meeting the students and meeting their needs.

Retention Letters were sent out in January and should have been signed and returned. If your child is in 3rd grade, this has particular significance as the 3rd grade guarantee requires meeting a specific standard. If you did not come to conferences, you need to contact your child's teacher ASAP.

Note from the Principal



If you have been following the month updates from LIS, you have not only been updated on the wonderful things that are happening each month here at LIS, but also are aware that coming out of the traumatic years of Covid, we are still facing challenges. These challenges are clearly the result of several years of isolation, distance, continual adjustments to routines and schedules or the lack thereof, escalated fears and uncertainty of the future and the unknowns of navigating an unexpected and sudden world crisis where we were constantly in flux..

All of these factors have a profound effect on our youngest and most vulnerable. These early years are developmentally critical not just for academic learning, but more importantly for social emotional development in our most impressionable children.

What are the ramifications of those years on our adult population? Now imagine how that affects our children. We are just beginning to understand the aftermath of this trauma. What are we seeing? Children who do not understand boundaries, appropriate positive interactions with others - both verbally and physically, how to accept correction and accountability, the difference between fantasy and reality, the power and ramifications of words and interconnectedness of a community where they are one of many. That's a lot, isn't it?

How does this play out at school? We see it in a lack of empathy for others or self-centeredness that lacks connection to others. We see it in behaviors that challenge the productivity and learning environment for others. We see it in children's impulsive response to conflict or adversity with anger and powerfully damaging words. We see it in children who lack motivation to succeed, struggling with learning gaps and self-esteem issues.

What are we doing about it? We have a team of professionals that address these issues everyday. Our teaching staff does an amazing job of balancing learning and social emotional issues. Students are redirected often and learning behaviors are always addressed first as a learning experience that eventually has to be balanced with appropriate consequences. That is evident in our consistent disciplinary response. We have extra mental health personnel such as: counselors, social workers, a behavior specialist, a school psychologist and pupil services director that are deeply involved in intervening where students need help.

When disconcerting things happen, especially when children say things that can be perceived as threatening-it now opens a whole process that includes isolation, followed up by a threat assessment that is rather lengthy but thorough. A team of professionals are involved in reviewing the document and making appropriate recommendations. As with all disciplinary measures- consequences are confidential. When I have conversations with parents, I will never use a student's name and specifically discuss the responsive steps to code violations. I will discuss the general options for appropriate response, but not what consequential decisions were made.. Confidentiality is respected and protected for children on both sides of any issue.

Finally when things happen, and they may, I ask that you remain calm. I know as a parent, we have an immediate protective response to keep our children from harm and hurt. It is hard to see the other side when our children are hurting. It is also easy to get caught up in the horrific things we see in the media at schools. Those events propagate fear, and understandably so. They are real and they did actually happen somewhere. So, how do we know what is credible and what is not? That's why we now have a threat assessment protocol and process.

We hear the word "Bully" all the time in response to almost any act of unkindness. True bullying is repeated behavior from the same perpetrator to the same victim. It should always be reported and then documented. Here at LIS, we respond every time we are contacted and respond in ways that we determine are appropriate. Often, I often find it difficult to identify, "Who is the real bully?" Very often-negative words, actions and responses are evident with both sides and difficult to ascertain where it all began. Students on social media are also sometimes an issue, whether it is Snapchat, Tik Tok or chatting with opponents on video games. In a digital world, there is a false sense of anonymity, disconnection and fantasy that children cannot fully comprehend.

If you have questions about our process, please give me a call. If you have any concerns, I certainly would welcome the opportunity to discuss and address them with you.

It is hard to imagine that we are on the downhill run for the 3rd quarter. Maybe it is just me, but I feel like the days are moving faster and faster. As I wind down from 43 years, believe it or not, I am not counting the days, but doing everything I can to make sure things are ready for new leadership. I am treasuring the moments I have with staff, students and parents. I am thankful for the many blessings in my life from experiences and the strong relationships I've had as a part of the LaBrae Family.

Happy St. Patrick's Day
Mrs. Kay Suzelis

